

Luban-lite IDE使用

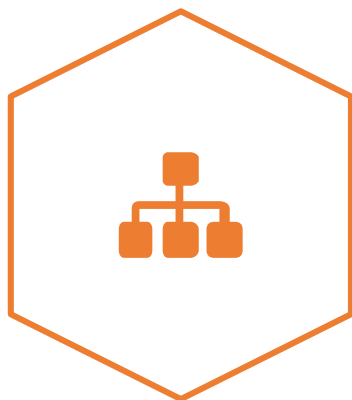
“工业芯、匠芯创”

报告人：董国君

日期：2024-05-24



配置环境



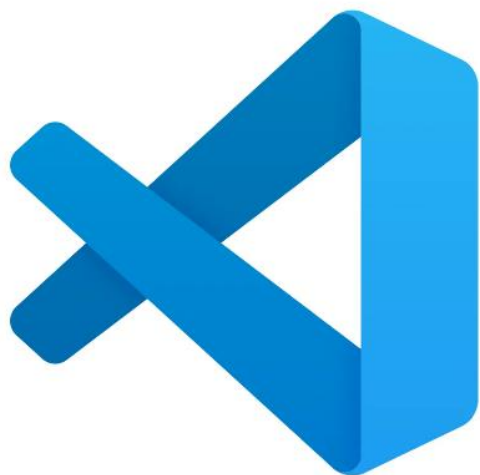
编译代码



修改配置

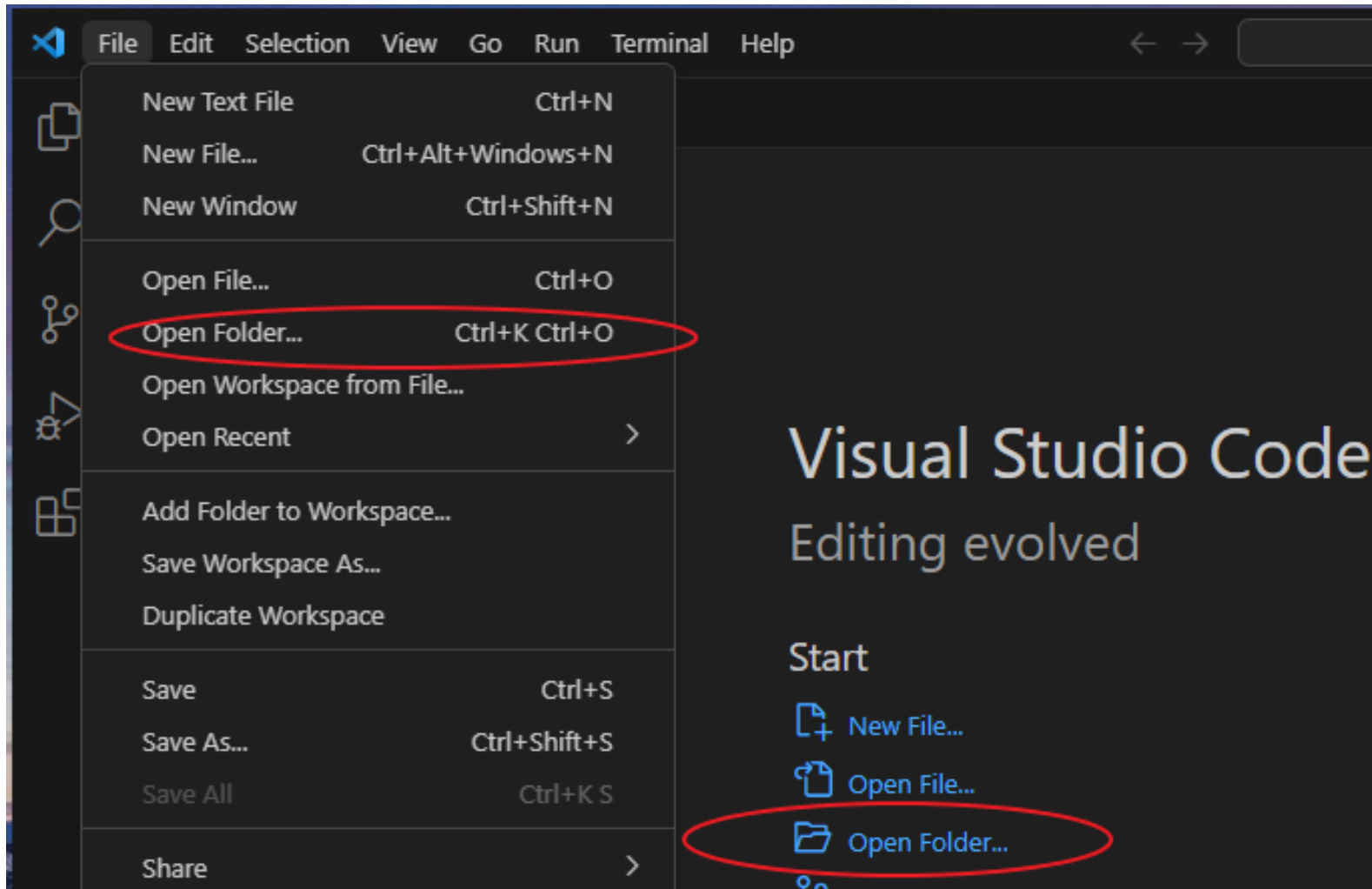


在线调试

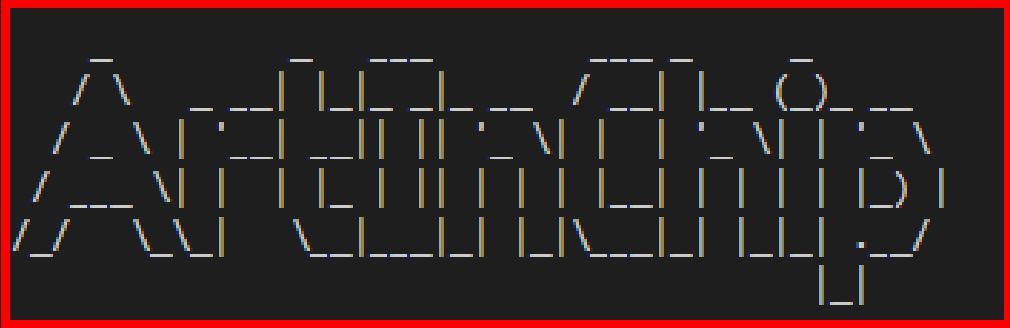


PART1 | 配置环境

- 用户体验好
- 全流程开发
- 配置简单



```
PROBLEMS 41 OUTPUT DEBUG CONSOLE TERMINAL
Luban-Lite command for Windows



Microsoft Windows [Version 10.0.17763.316]
(c) 2018 Microsoft Corporation. 保留所有权利。

D:\luban-lite-master-V104>
```

PART2 | 编译代码


```
PROBLEMS 41 OUTPUT DEBUG CONSOLE TERMINAL

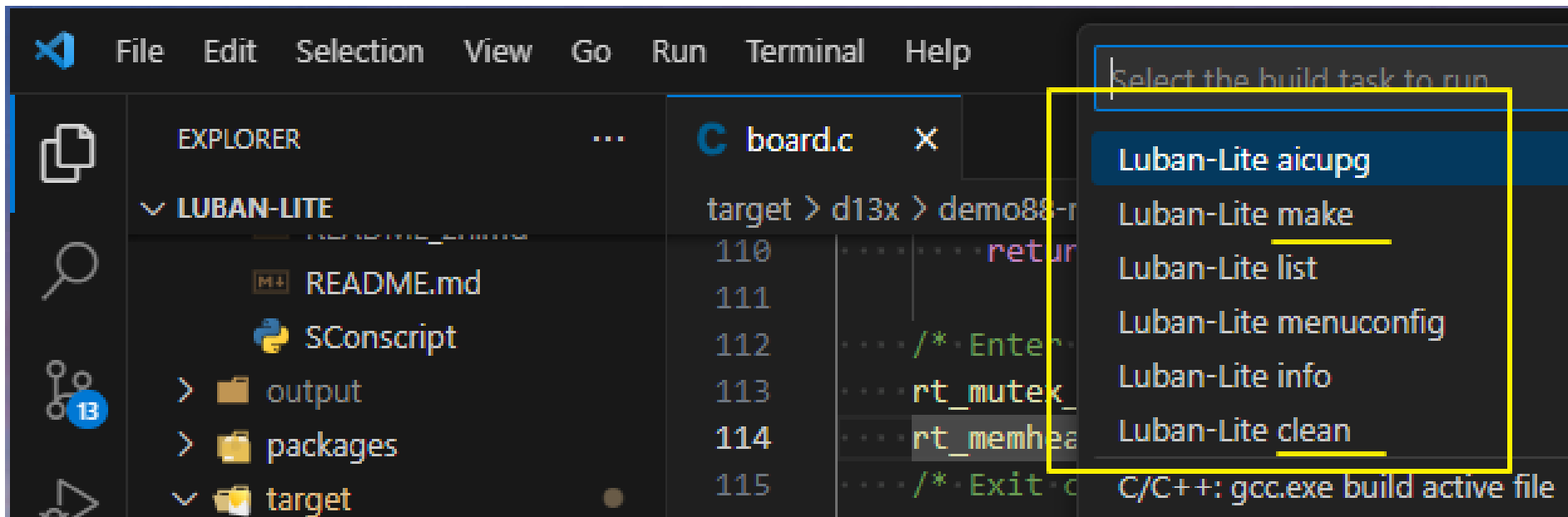
          _ _ _ _ _
         / / / / /
        / / / / /
       / / / / /
      / / / / /
     / / / / /
    / / / / /
   / / / / /
  / / / / /
 / / / / /
/ / / / /

Microsoft Windows [Version 10.0.17763.316]
(c) 2018 Microsoft Corporation. 保留所有权利。

D:\luban-lite-master-V104>m
scons: Reading SConscript files ...
?[47;30m>>> Extract toolchain Xuantie-900-gcc-elf-newlib-mingw-V2.6.1-20220906-trim.tar.gz ...?[0m
args.outfile: D:\luban-lite-master-V104\partition_table.h

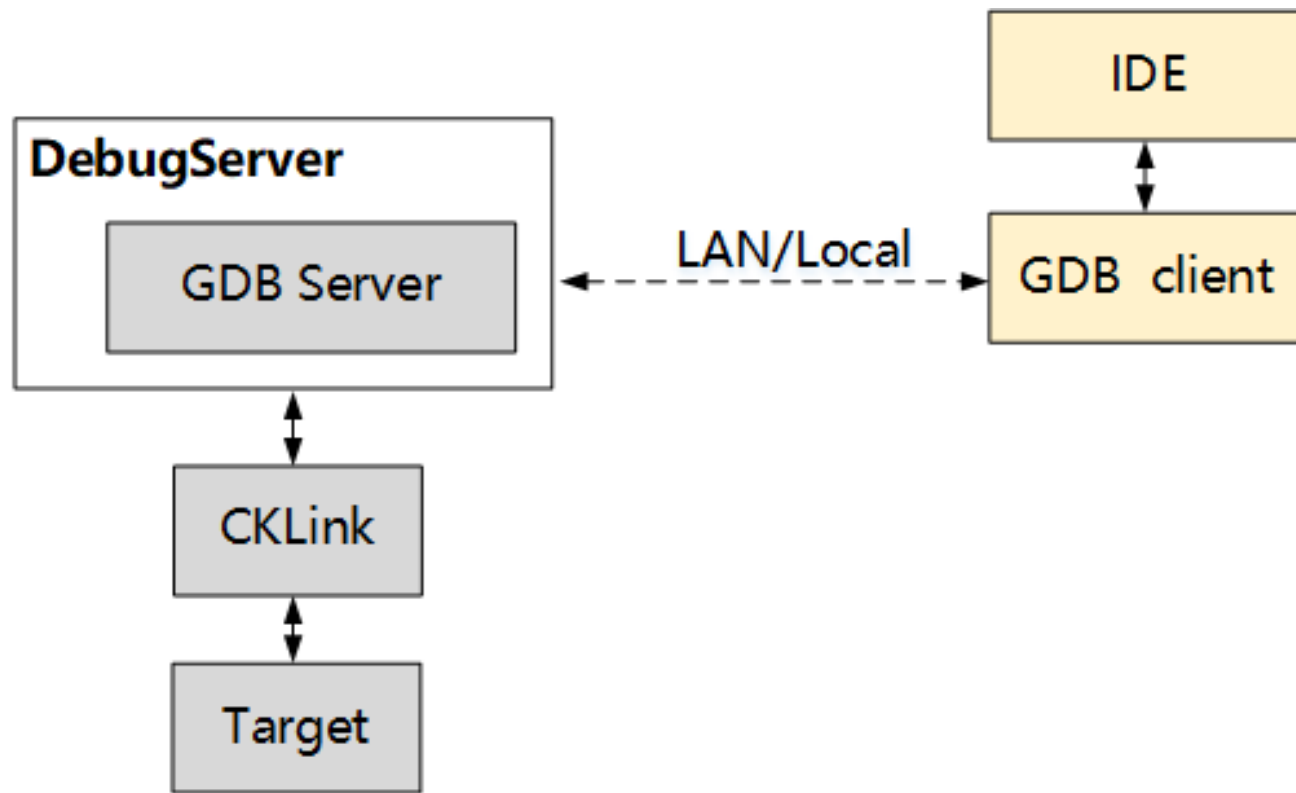
scons: warning: No version of Visual Studio compiler found - C/C++ compilers most likely not set correctly
File "D:\luban-lite-master-V104\SConstruct", line 20, in <module>
Newlib version:3.2.0
nftl use lib ....
D:\luban-lite-master-V104\kernel\rt-thread
scons: done reading SConscript files.
scons: Building targets ...
scons: building associated VariantDir targets: output\d21x_demo128-nand_rt-thread_helloworld
  CC application\rt-thread\helloworld\main.c
  CC bsp\artinchip\drv\adcim\drv_adcim.c
  CC bsp\artinchip\drv\audio\drv_audio.c
  CC bsp\artinchip\drv\audio\drv_drivers.c
```

- **Ctrl + Shift + B**



PART3 | 修改配置

PART4 | 在线调试



- **硬件**

AIC-JTAG

- **软件**

T-HEADDebugServer

- **脚本**

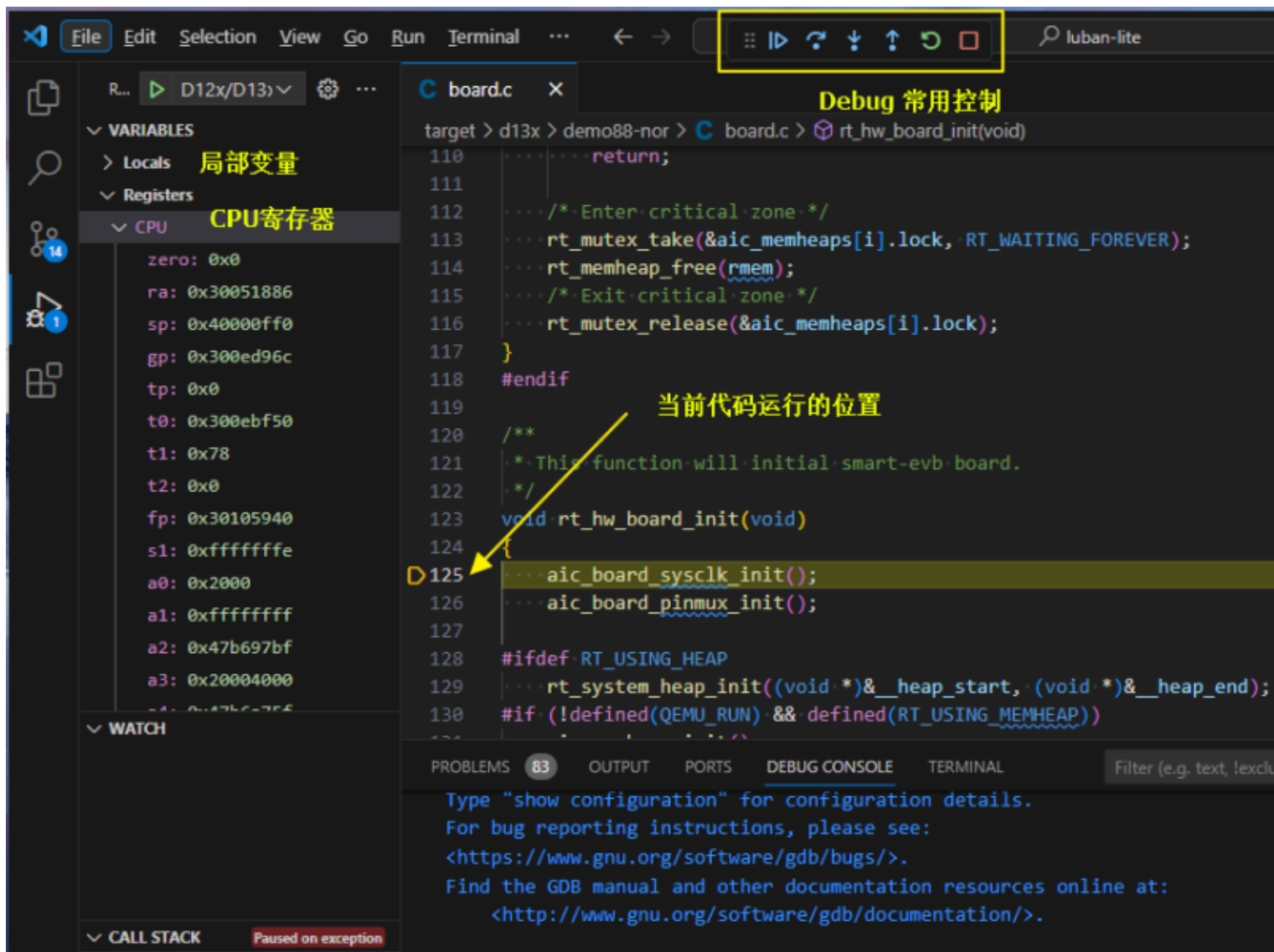
.vscode/launch.json

```
.vscode > launch.json > [ ] configurations > { } 0 > [ ] setupCommands > { } 8
8  {
9    "name": "D12x/D13x·Load",
10   "type": "cppdbg",
11   "request": "launch",
12   "cwd": "${workspaceFolder}",
13   "program": "${cwd}/output/d13x_demo88-nand_rt-thread_helloworld/images/d13x.elf", // FIXME
14   "args": [],
15   "stopAtEntry": false,
16   "environment": [],
17   "externalConsole": true,
18   "MIMode": "gdb",
19   "miDebuggerPath": "${cwd}/toolchain/bin/riscv64-unknown-elf-gdb.exe",
20   "setupCommands": [
21     {
22       "description": "Enable pretty-printing for gdb",
23       "text": "-enable-pretty-printing",
24       "ignoreFailures": true
25     },
26     {
27       "text": "set arch riscv:rv32"
28     },
29     {
30       "text": "set height 0"
31     },
32     {
33       "text": "mem 0x30040000 0x3013ffff rw"
34     },
35     {
36       "text": "mem 0x10000000 0x19ffffff rw"
37     },
38     {
39       "text": "mem 0x40000000 0x41ffffff rw"
40     },
41     {
42       "text": "target remote 172.16.x.x:3333" // FIXME

```

1. 修改为当前方案的配置

2. DebugServer正常连接JTAG调试器后，
会打印可连接的IP和端口



让使用更简单

Sincere Cooperation For A Win-win Situation



13726219952



Jun.chen@artinchip.com

Luban-lite 技术交流群